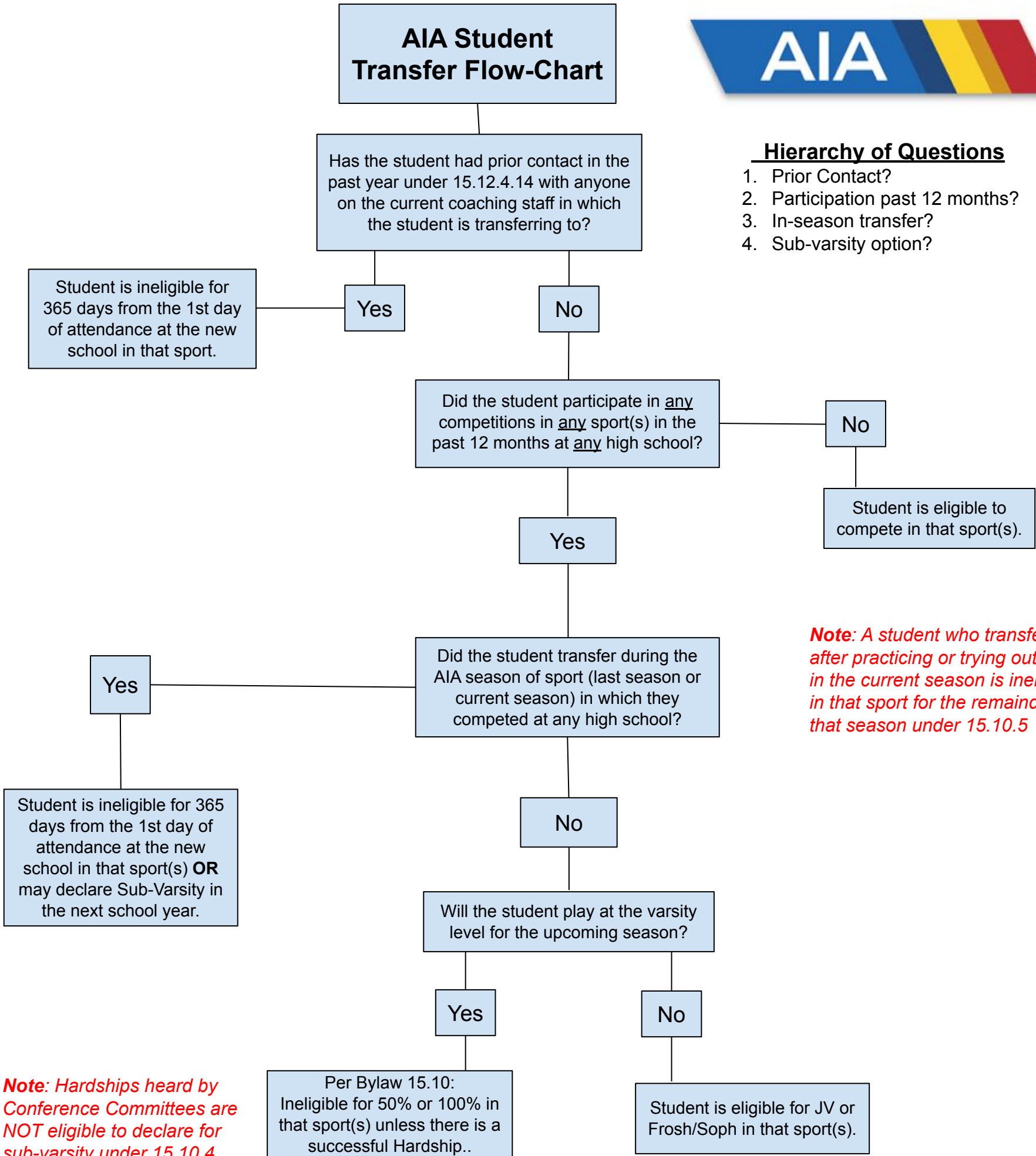


# AIA Student Transfer Flow-Chart



## Hierarchy of Questions

1. Prior Contact?
2. Participation past 12 months?
3. In-season transfer?
4. Sub-varsity option?



**Note:** A student who transfers after practicing or trying out only in the current season is ineligible in that sport for the remainder of that season under 15.10.5

**Note:** Hardships heard by Conference Committees are NOT eligible to declare for sub-varsity under 15.10.4